

Wolf Head



Visit KDA Cross Stitch Site

<https://www.kdacrossstitch.com>

© KDA Cross Stitch

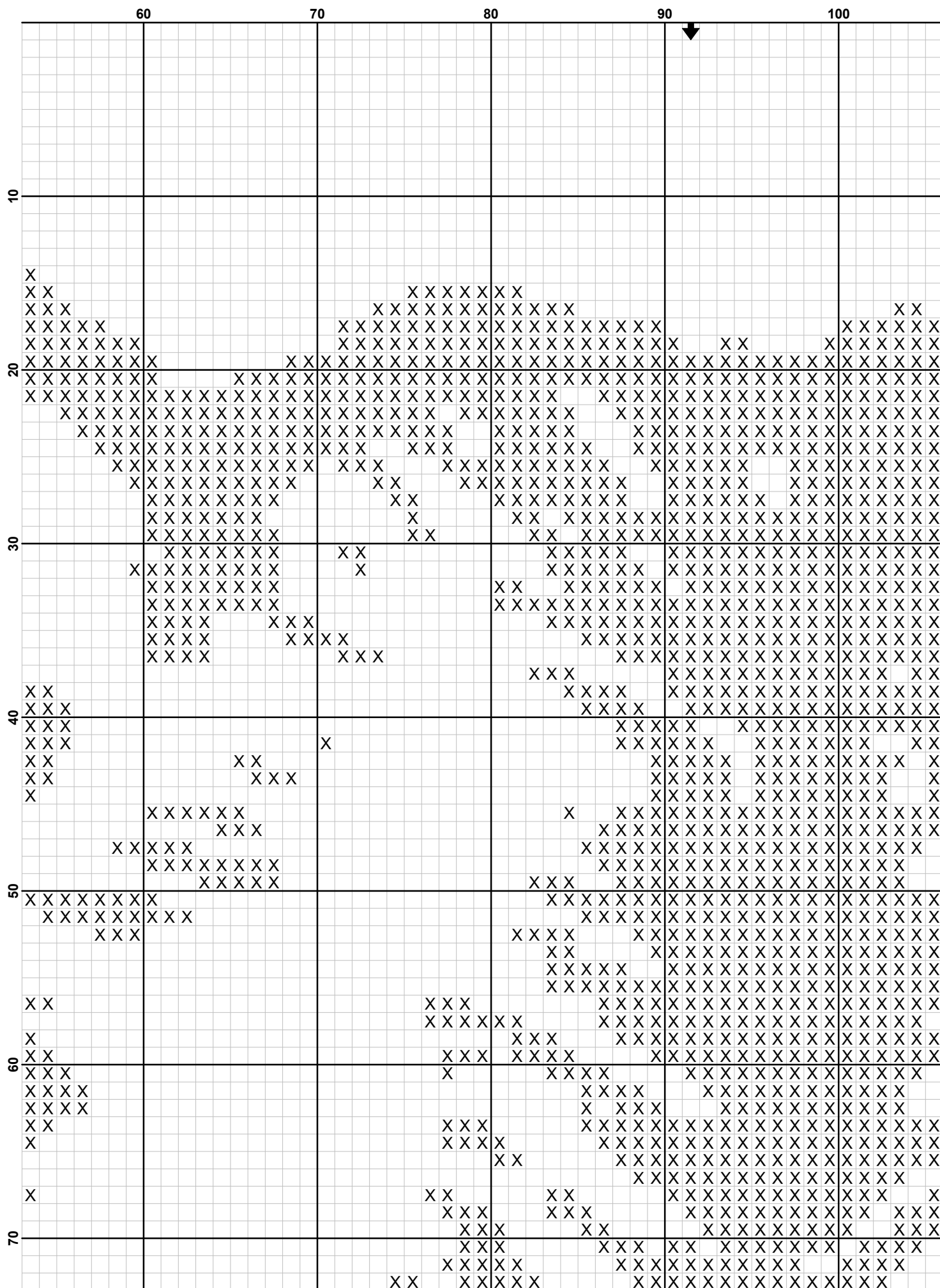
This cross stitch pattern is for your personal use only! KDA Cross Stitch retains the copyright on this cross stitch pattern.

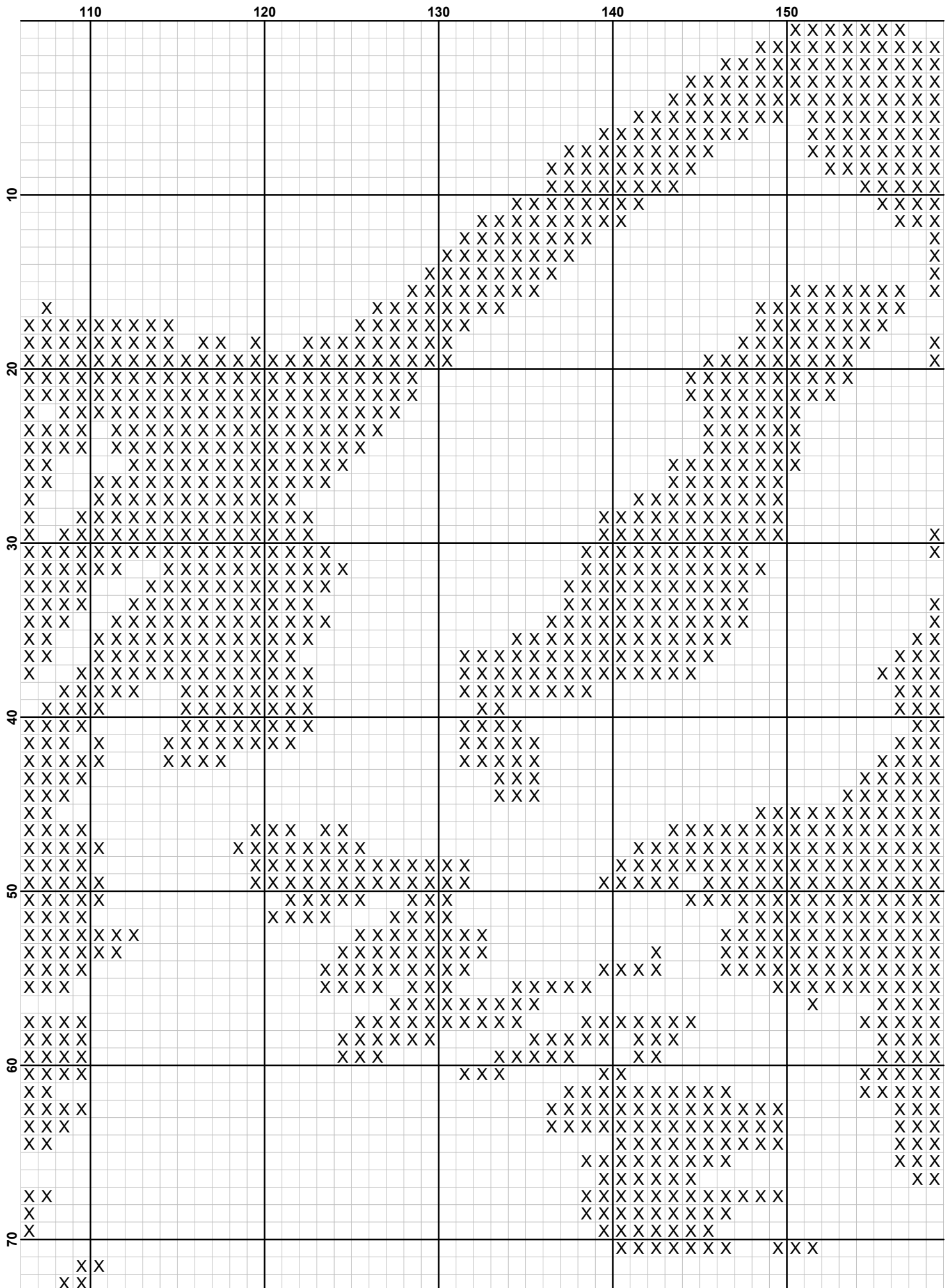
**You cannot resell this pattern in any shape or form whatsoever.**

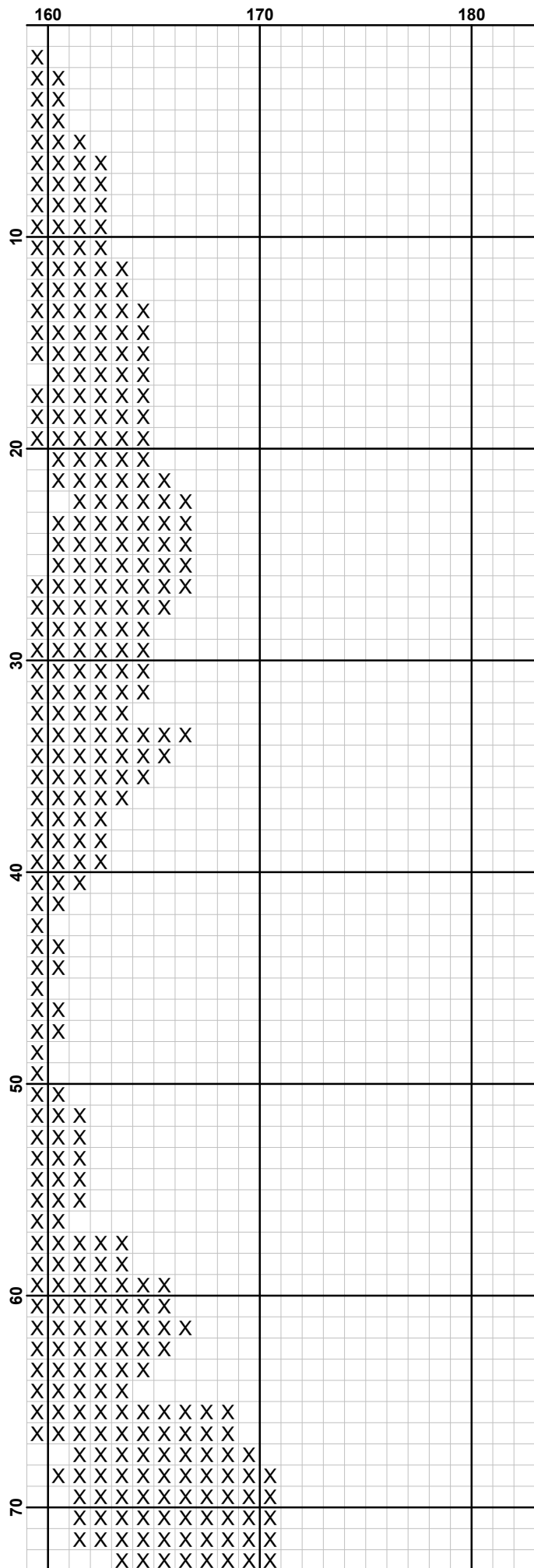
This includes, but is not limited to electronic format, (not to be shared through email, groups, blogs or unauthorised web sites). Please do not copy, reproduce, modify, republish, upload, or distribute this pattern in any form without permission from KDA Cross Stitch

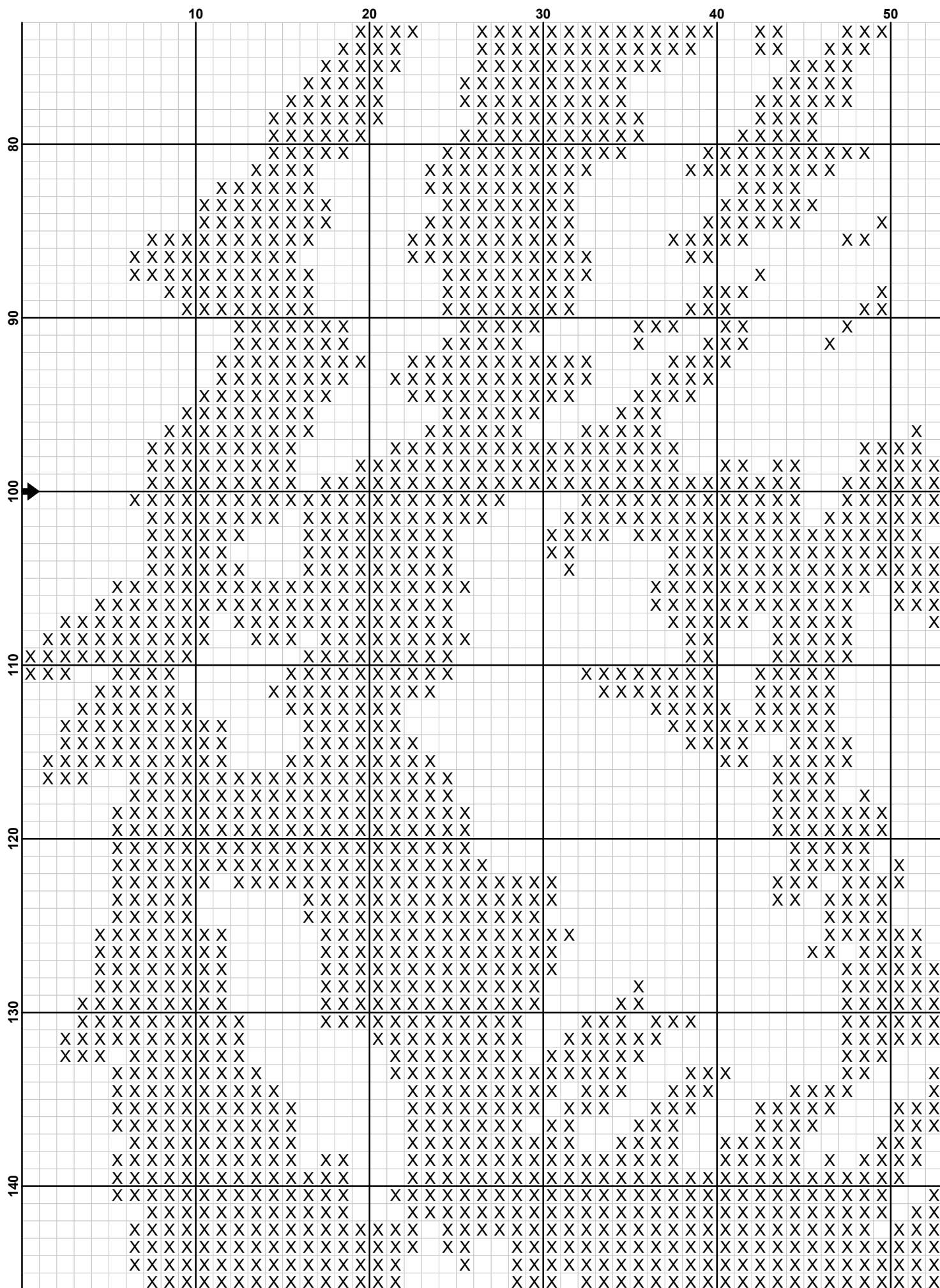
You cannot print out hard copies of this pattern to sell though unauthorised web sites, eBay, markets or stores.

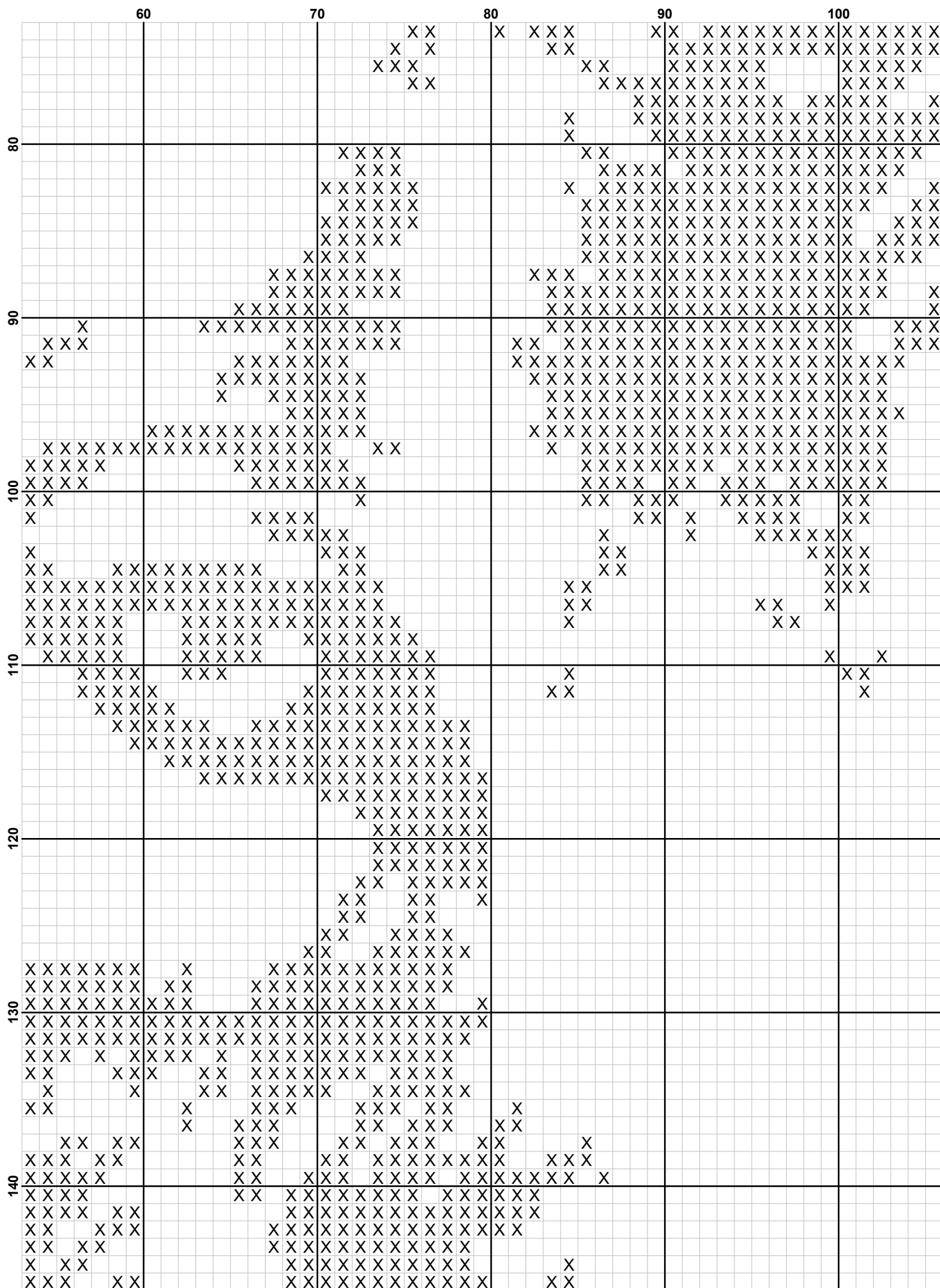


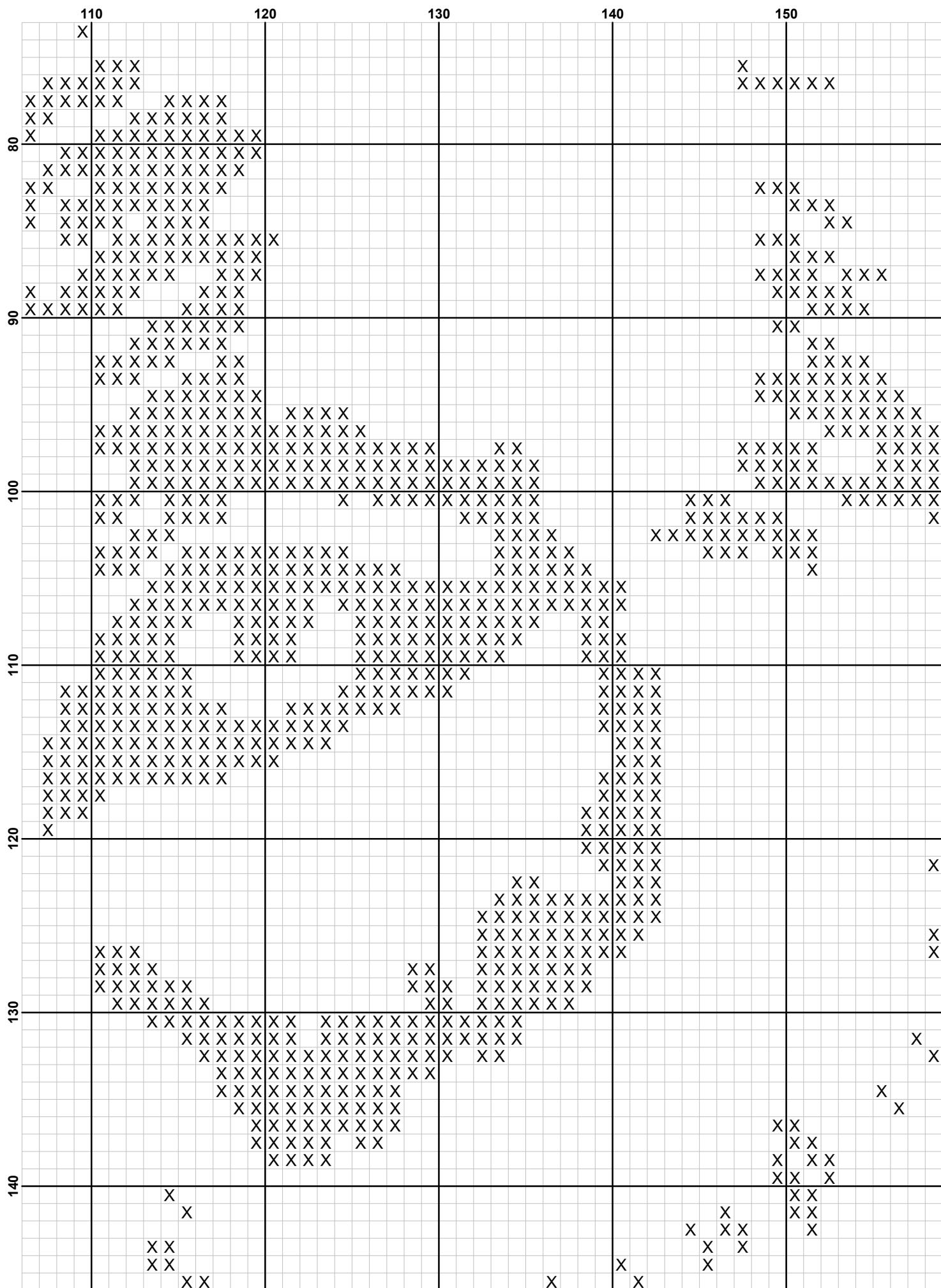




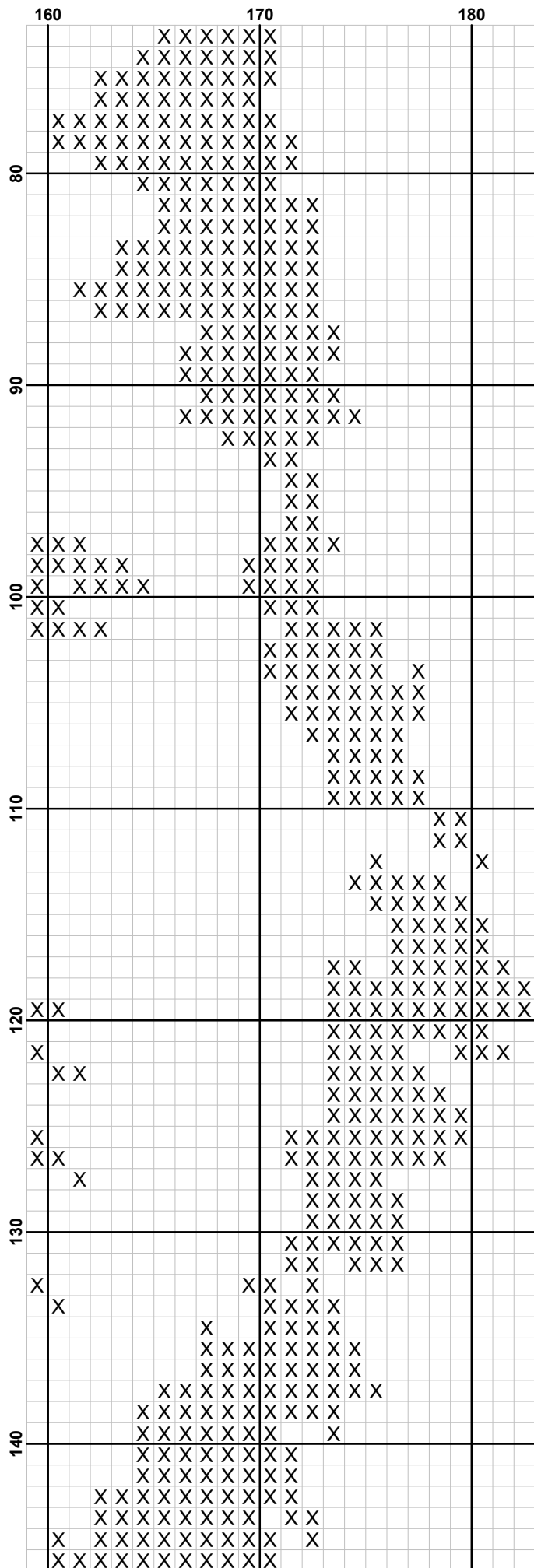


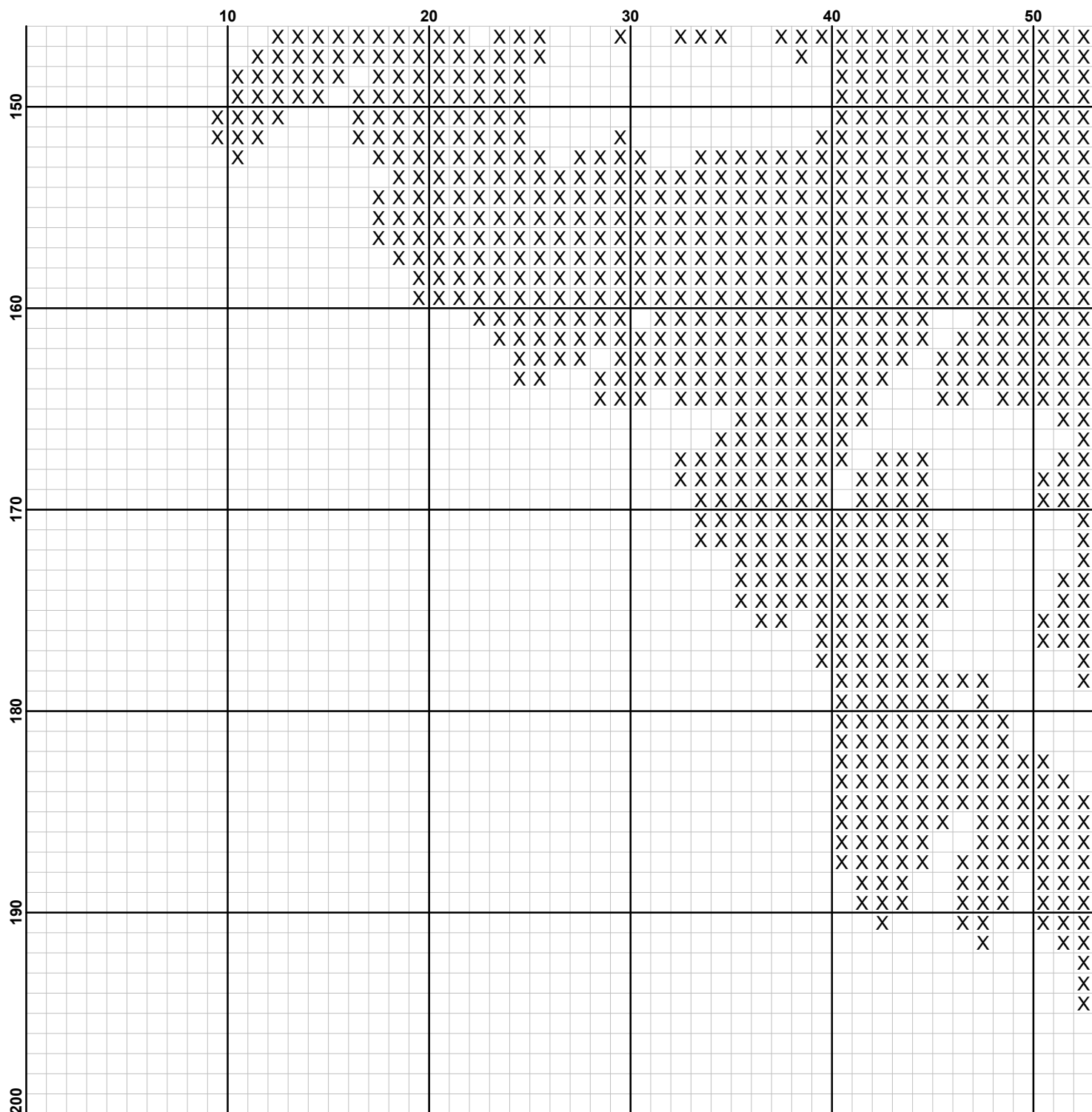


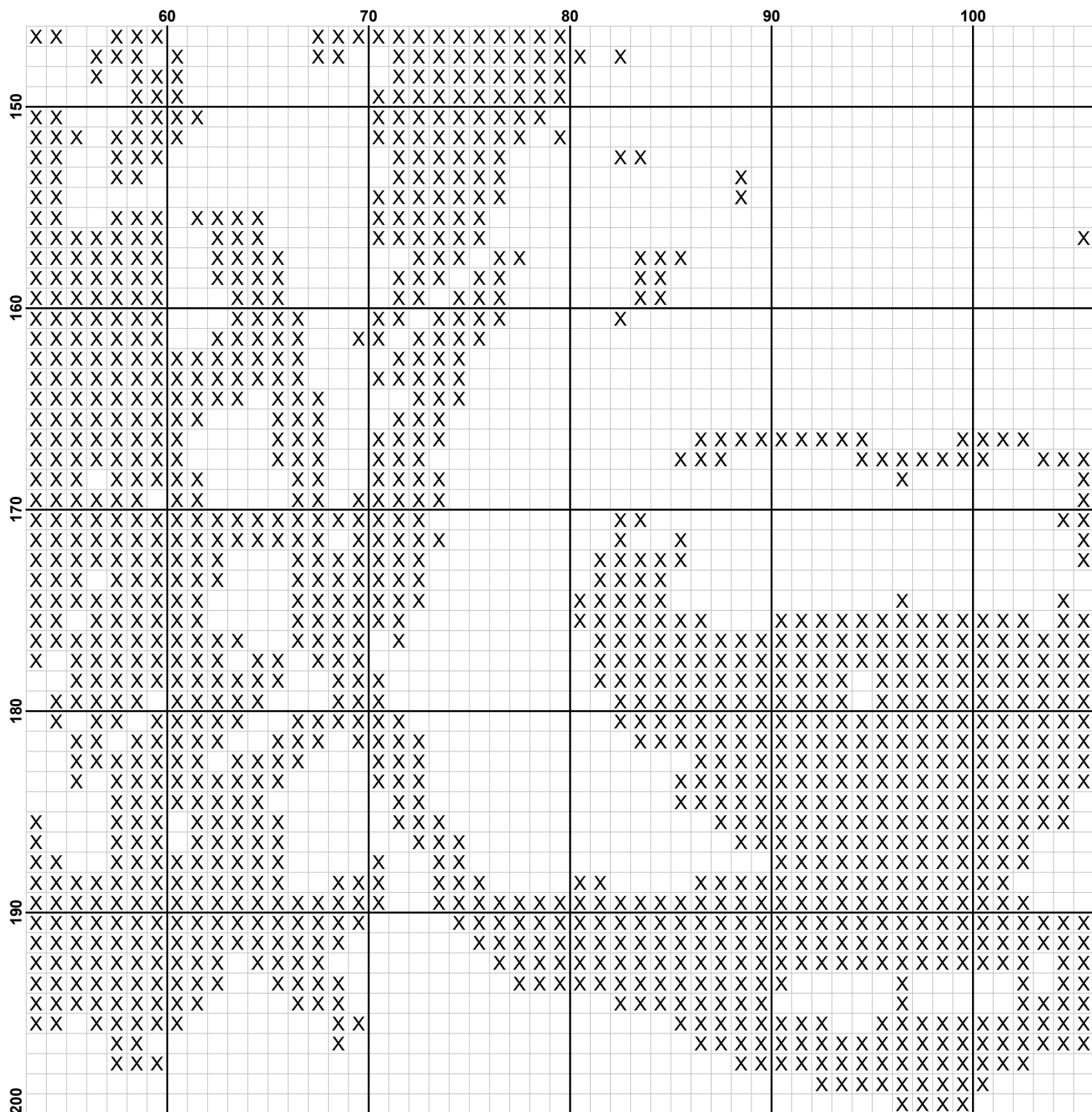


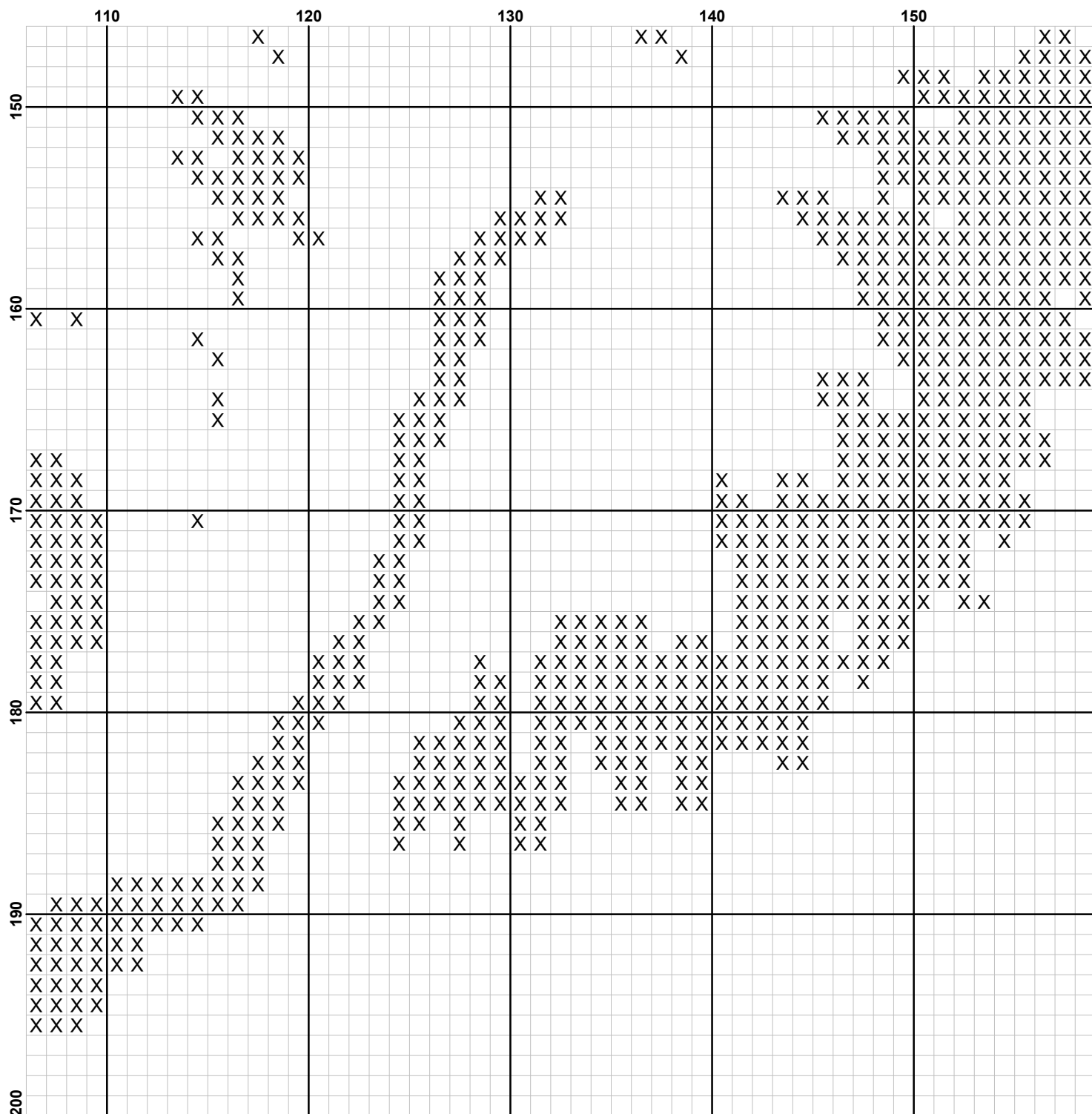


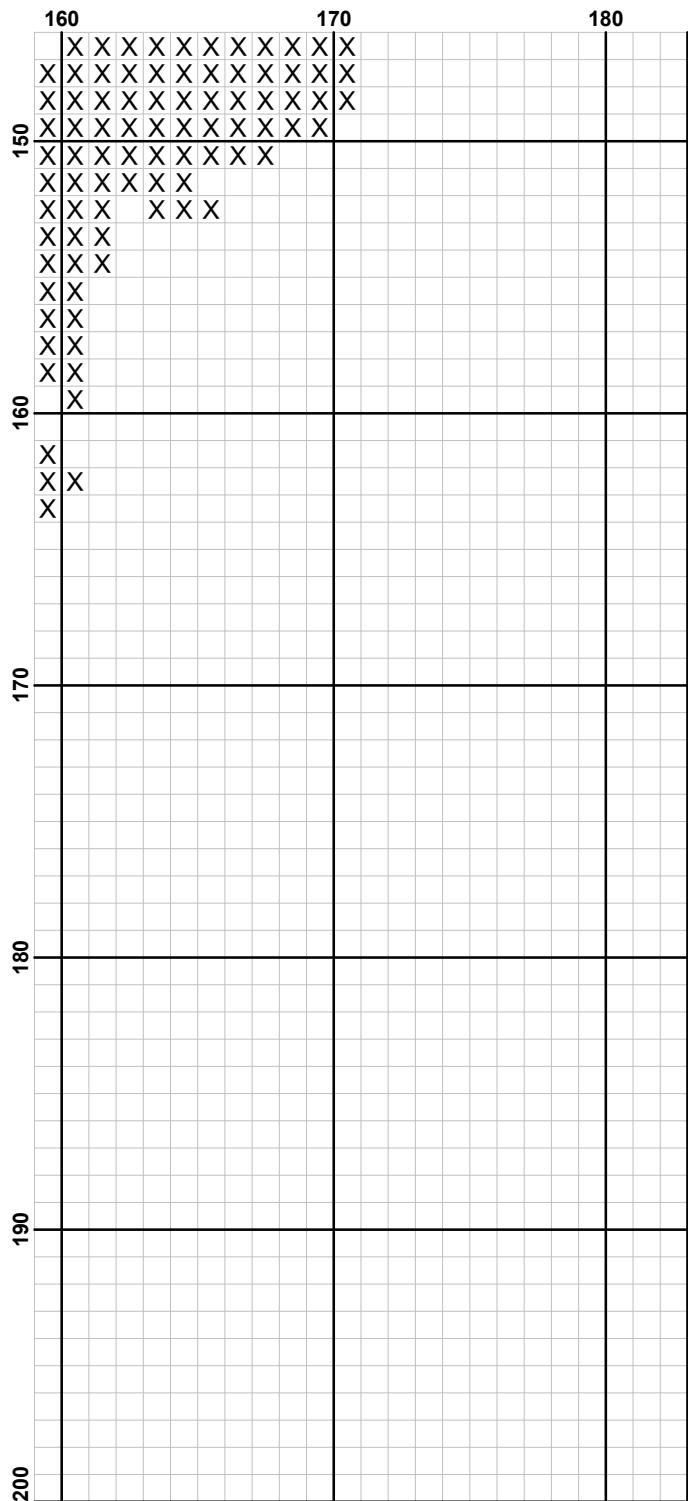













**Pattern Name:** Wolf Head  
**Designed By:** by KDA Cross Stitch ©  
**Company:** www.kdacrossstitch.com  
**Copyright:** © KDA Cross Stitch all Rights Reserved  
**Fabric:** Aida 14, White  
 183w X 200h Stitches  
**Size(s):** 14 Count, 13w X 14-1/4h in  
 16 Count, 11-3/8w X 12-1/2h in  
 18 Count, 10-1/8w X 11h in  
 22 Count, 8-1/4w X 9h in

**Floss Used for Full Stitches:**

Symbol	Strands	Type	Number	Color
 X	2	DMC	317	Pewter Gray

**Usage Summary****Strands Per Skein:** 6**Skein Length:** 313.0 in

	Type	Number	Full	Half	Quarter	Petite	Back(in)	Str(in)	Spec(in)	French	Bead	Skein Est.
■	DMC	317	12552	0	0	0	0.0	0.0	0.0	0	0	6.000